

JB

Custom **Concepts**

JB Custom Concepts is a northwest Ohio-based manufacturer that specializes in lighting and steel fabrication. We are a second-generation family-owned business that creates custom products for small businesses nearby as well as high-end custom light fixtures for luxury hotels and businesses worldwide.

We work closely with each client to nail every detail. Our partners have counted on our creativity and quality for more than a decade.

Our talented team offers design services as well to help our clients bring their unique visions to life.



All images and descriptions within this catalog are the property of JB Custom Concepts. This catalog showcases our design and fabrication abilities and many of the products within may be under design agreements with respective clients.

Light Source Types

Light styles and wattage per product line

Socket Lights

Light sources that can be replaced by the client with a new bulb as needed.
For chandeliers, the bulb needs to be rated for downward facing installation.

E26 Socket
60 Watt
A19



E12 Socket
60 Watt
Round



E12 Socket
60 Watt
Torpedo



E12 Socket
2 Watt LED
Torpedo



E12 Socket
7 Watt LED
Round



G9 Socket
3 Watt
LED



Hardwire Lights

Light sources that require a qualified electrician to change

LED Endostar
3000K or 2700K



LED Strip
2700K
Not UL listed

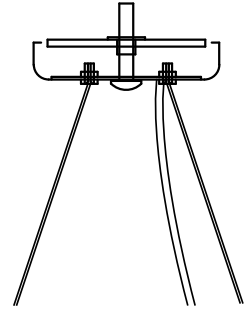


Canopy Styles

Each has variations depending on size and weight of fixture being supported.
Custom sizes available

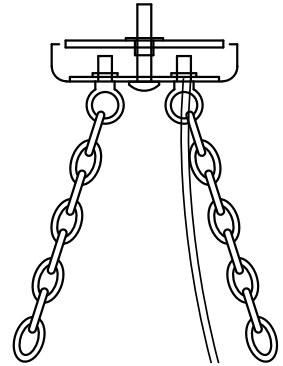
Cable Mount (C)

Upper canopy secured to junction box and building structure per fixture requirements with 1-8 cables going down to hooks, loops, or side exit grippers on the fixture's frame, with external 3 conductor power feed.



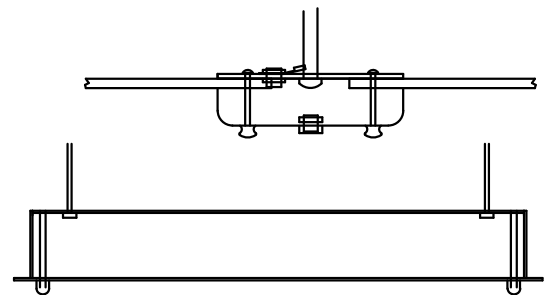
Chain Mount (CH)

Upper canopy secured to junction box and building structure as defined per fixture requirements with 1-8 chains attached to canopy with loops or hooks, with external 3 conductor power feed.



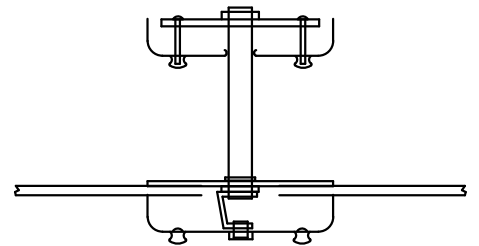
Flush Mount (FM)

Canopy is part of the frame and the frame is secured directly to the junction box and the building structure as defined per individual fixture requirements. Commonly used with fixtures where the LED driver is housed in the canopy.



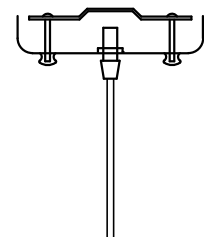
Pipe Mount (PM)

Upper canopy secured to junction box and building structure per fixture requirements, with a single pipe going from the upper canopy to a secondary canopy on the fixture. Pipe size and length varies depending on fixture and customer specifics. Power feed travels through center of the pipe.



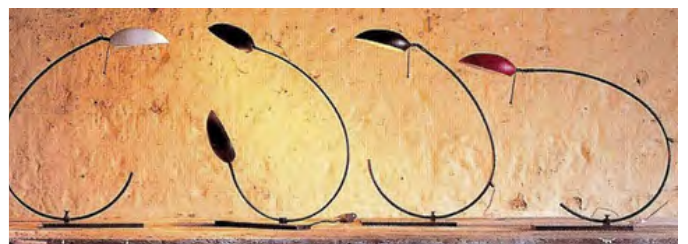
Electrical Only (1W)

Upper canopy secured to junction box and building structure per fixture requirements, lower fixture is supported entirely by power feed wire. This style only works when the canopy is supporting less than 10 pounds, either due to an extremely lightweight fixture or support from a secondary source.



Incandescents

Fixtures with sockets, bulbs can be easily swapped out
Can be listed under UL 1598, but must be fixed to the building structure
Table lamps and floor lamps not UL listed



Arctic Pear

Standard finishes: Patina Bronze and Polished Nickel
 Incandescent: E12 sockets

Round and rectangular most common, from as small as 9" diameter up to 96" diameter



Oval



Wave



Single

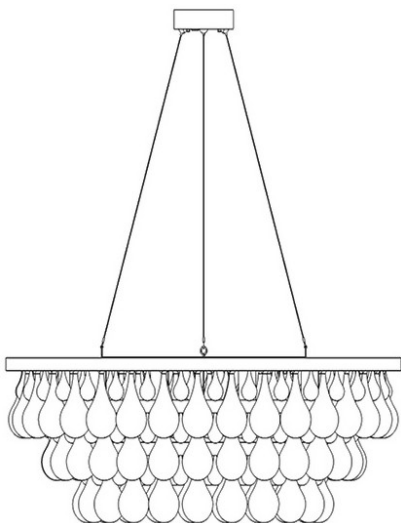


Double

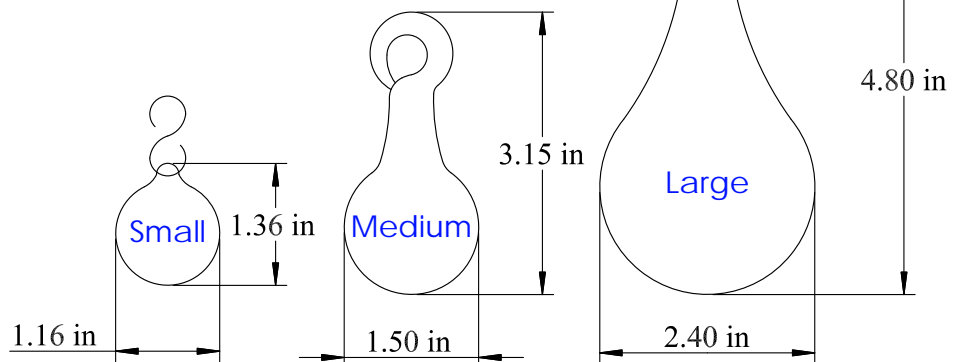
Wall light



Cable mount most common, but flush mount and pipe mount also occur regularly



Glass drops most fixtures use large and small, but table lamps and wall lights also use the medium glass drop



Light Drizzle

Standard finishes: Patina Bronze and Polished Nickel
 Incandescent: E12 sockets

Spiral



Rectangle



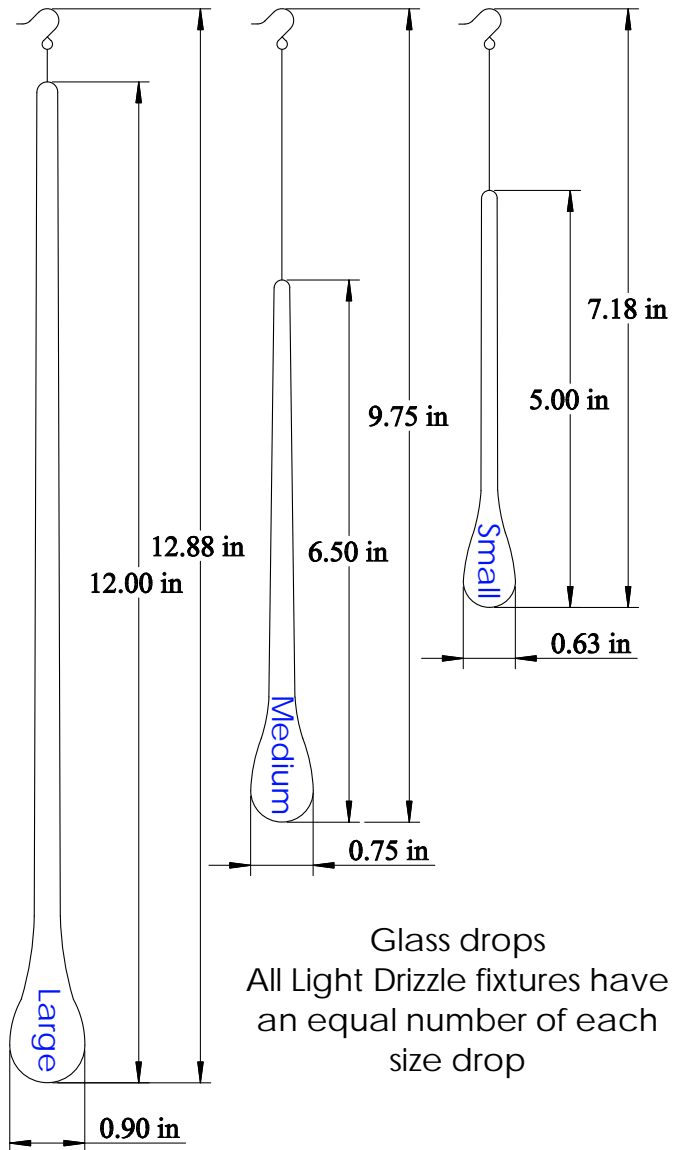
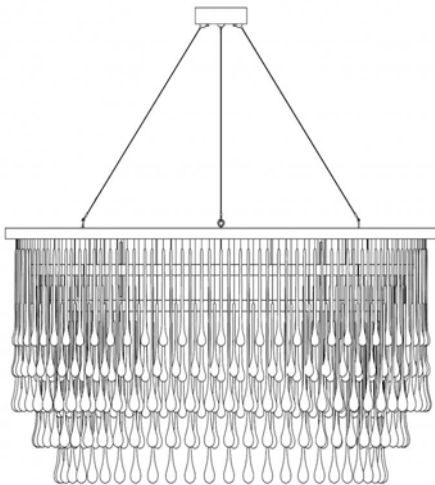
Round



Wall light



Cable mount most common, but flush mount and pipe mount also occur regularly



Glass drops
 All Light Drizzle fixtures have an equal number of each size drop

Eclipse

Standard finish: gloss black powder paint
Incandescent: E12

Dark horsehair
(standard)



Round

Pale horsehair



Oval

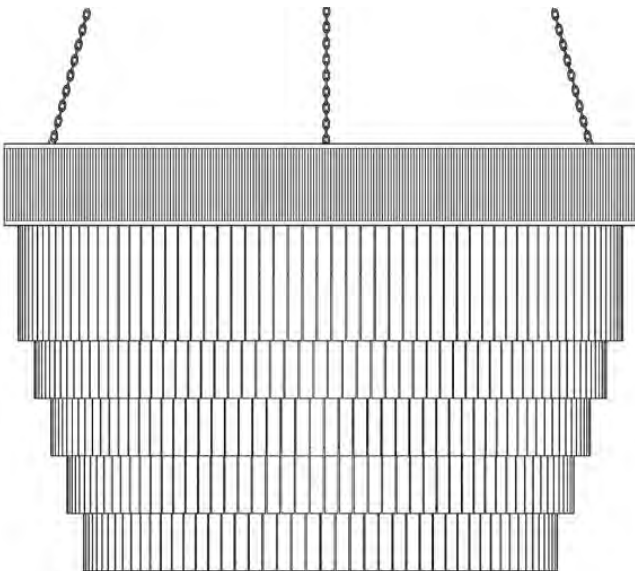


Wall light pendant

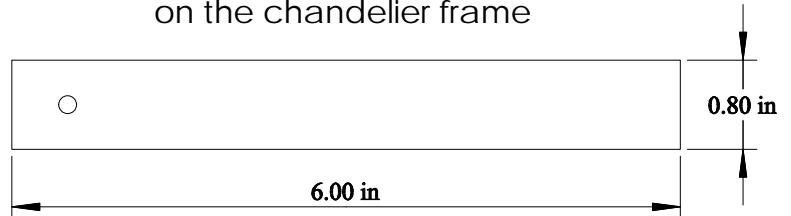


Double layers
of 3 tiers each

Chain mount most common



Horn sticks in black and pale
with a small hole to hang from hooks
on the chandelier frame



Aquarelle

Standard finish: Satin Nickel powder paint

Incandescent: E12

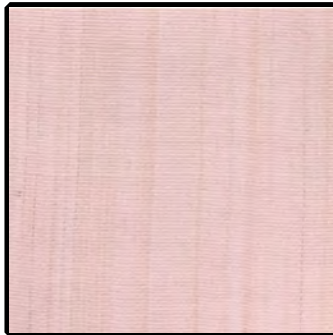
Celadon



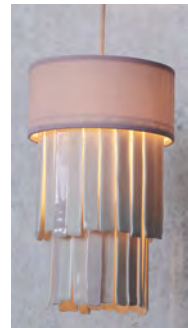
Oval



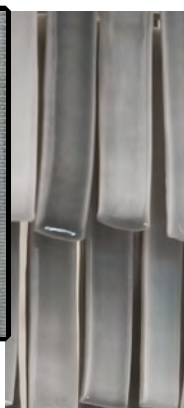
Coral



Pendant



Sky



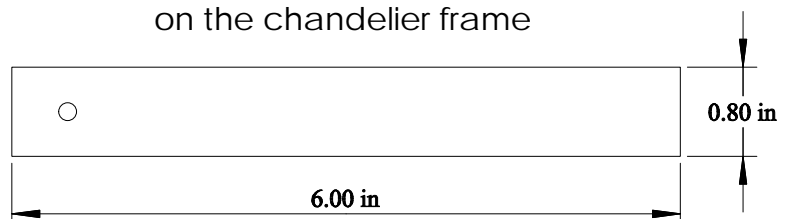
Round



Cable mount most common



Porcelain sticks in Celadon, Sky, or Coral with a small hole to hang from hooks on the chandelier frame



Cloud Shade

Standard finishes: Mirror Silver powder paint
Incandescent bulb E26



Standard round sizes

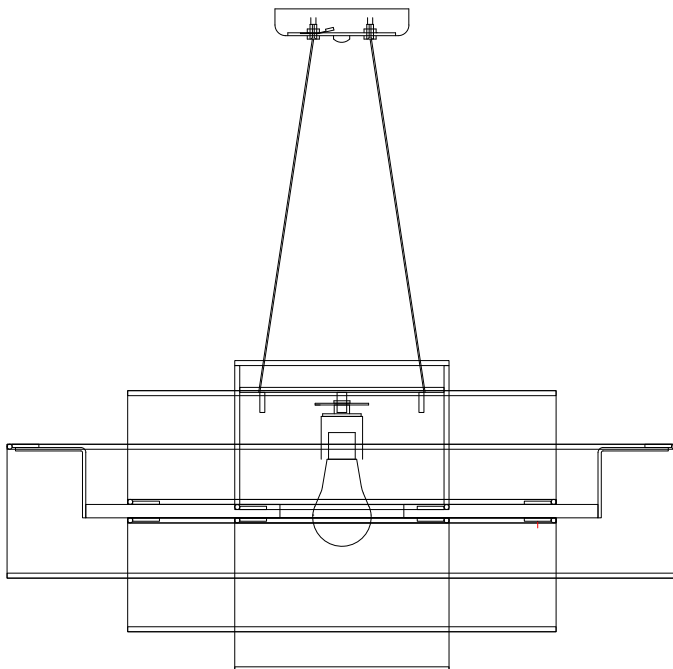
25" 1 Light

38" 3 Light

50" 3 Light

Laminated shade material
fabric, clear styrene, and metallic screen fabric.
Appearance is determined by inner fabric

Cable mount standard



Five shades of round fabric mounted to a
central steel frame

Inward appearance Outward appearance



Graphite

Snow

Old Rose

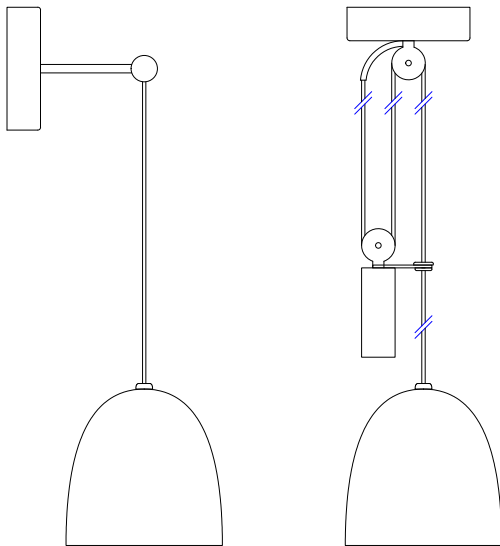
Surya

Oak shades with brass hardware and oak canopies
Incandescent: e12

Pendant



Wall light



Wall lights suspended from brass arm.
Pendant lights include a brass pulley
assembly for adjusting height.

White oak shades are carved while still green,
causing intentional cracks in the wood.
Cracks and bottom edge adorned with
golden gilding. Each shade is unique and
variations in size and shape are common.
Linen covered powerfeed



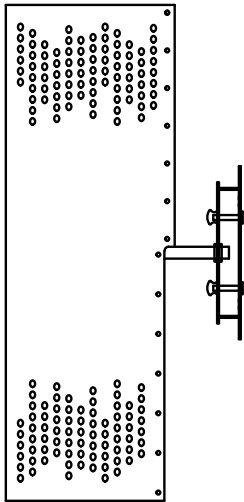
Lancelot

Standard colors: white, black, navy blue, brown

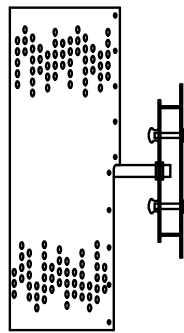
E12 socket 60W

Hand punched leather shades

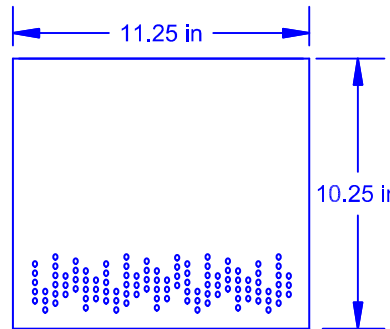
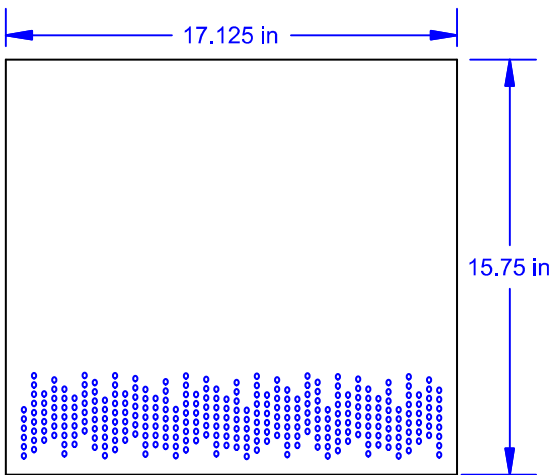
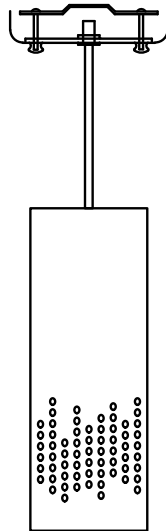
Wall light
large



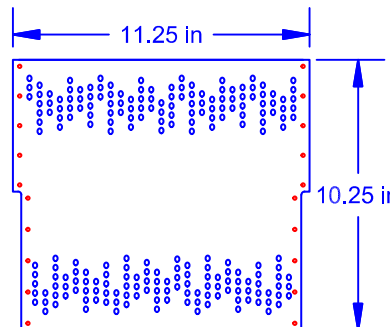
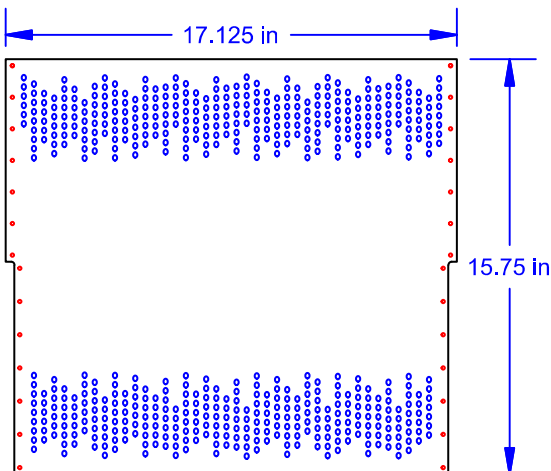
Wall light
small



Pendant



Pendant shades feature hole patterns on only 1 side and have 1 bulb



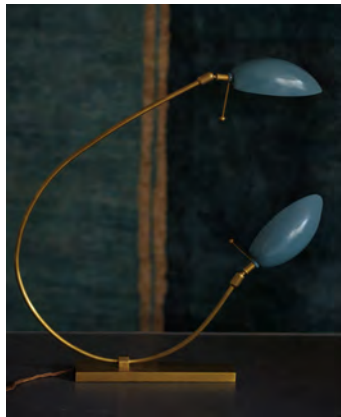
Wall light shades feature a notch for the wall light arm
2 sets of hole patterns for 2 bulbs

Standard colors: Wall light or canopy is Anodex Bronze, light sockets and shade backer either white (for white shades) or black (for black, navy blue, or brown shades)

Scorpion

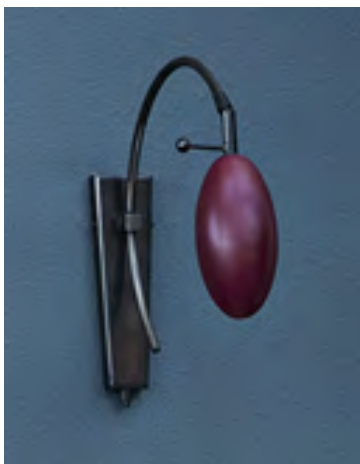
Bronze lights with colorful metal shades
Standard frame colors - dark bronze and bright brass
Standard head colors - black, red, white, grey, yellow
Incandescent: G9

Table lamp
available with 1 or 2 heads



Adjustable heads to direct light, switch on power cord

Wall light



Sungaya

Floor lamps and table lamps covered in hand stitched leather with silk shades
Incandescent E26 socket with pull chain switch

Table lamps



6 ft power cord

Shipped in 3 separate boxes - stem, shade, and base

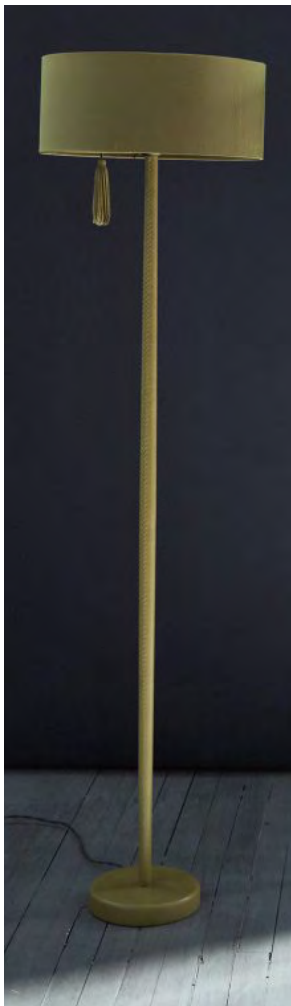
Mustard - Twisted Bronze wire, black plug

Oyster - Twisted Silver Rayon wire, black plug

Putty - Twisted Beige wire, white plug

Burgundy - Twisted Vino wire, black plug

Floor lamps



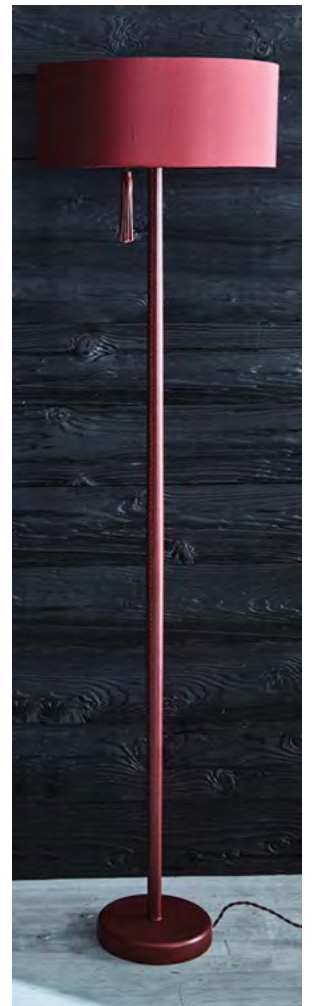
Mustard



Oyster



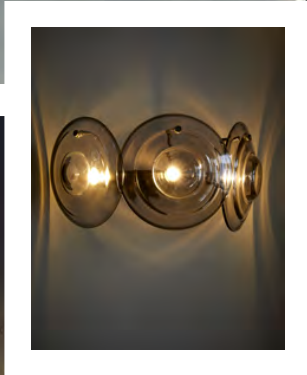
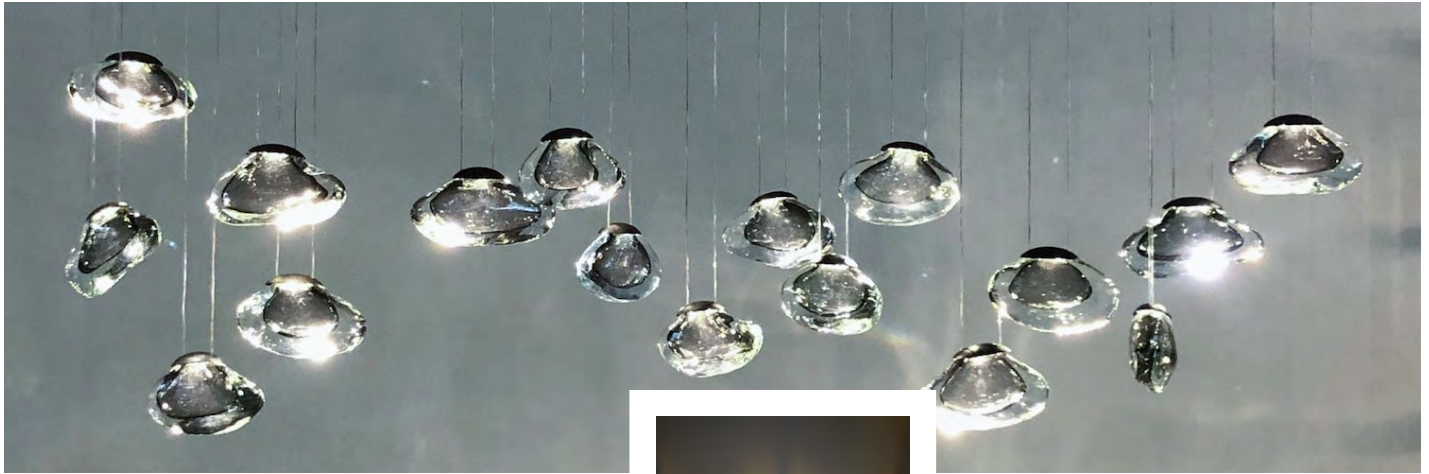
Putty



Burgundy

LED

Fixtures with hardwired LEDs, require a qualified electrician to replace.
Can be listed under UL 8750, but must strictly adhere to the terms of
JB Custom Concepts UL listing.



Round



Seed Cloud

Standard finishes: powder paint
LED - 90+CRI 3000K or 2700K

Irregular



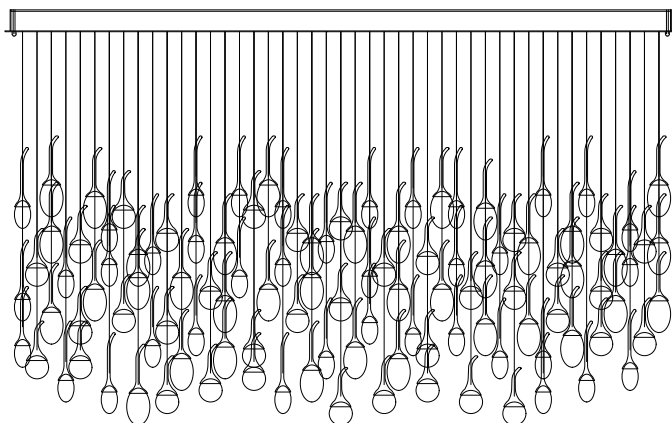
Rectangle



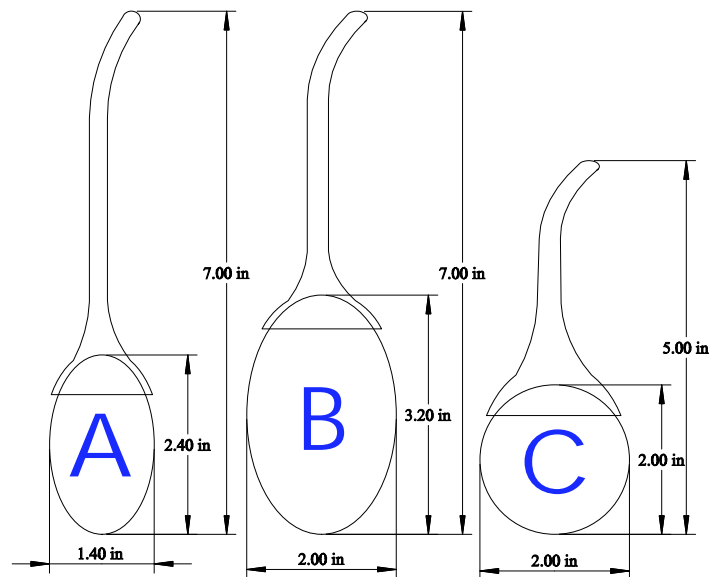
Seed cloud fixtures are extremely customizable, can be made in nearly any size, shape, or number of buds. Fixtures often are made so large that they need to be assembled from multiple smaller sections. LED drivers are required, and the specific driver will vary depending on the requirements of the fixture.

Flush mount most common, but cable mount also occurs regularly

Glass drops and brass buds each designated A, B, or C. Buds come in bronze or satin nickel finish



Each bud is measured to a precise individual length to create the desired effect of the bud cluster and overall size and height



Seed Cloud (Variations)

Variations from the standard ceiling mount Seed Cloud



Damselfly wall light
solid cast brass housing with 6 LEDs
EPT D9 driver - UL listed
available in brass or satin nickel finish



Seed Cloud table lamp (landscape)
steel housing with 7 seed cloud buds suspended
by chains 6 ft twisted black power cord with
toggle switch on back of base
not UL listed
Satin Pewter finish standard



Seed Cloud table lamp (portrait)
steel housing with 6 seed cloud buds
suspended by chains
6 ft twisted black power cord with
toggle switch on back of base
not UL listed
Satin Pewter finish standard

Moonlight Murmuration

Standard finishes: powder paint
LED - 90+CRI 3000K or 2700K

Oval



Irregular



Moonlight Murmuration fixtures are extremely customizable, can be made in nearly any size, shape, or number of buds. Fixtures often are made so large that they need to be assembled from multiple smaller sections. LED drivers are required, and the specific driver will vary depending on the requirements of the fixture.

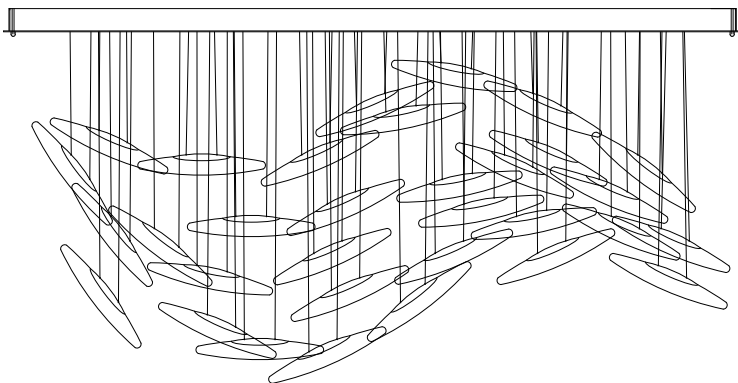
Rectangle



Customizable Formations

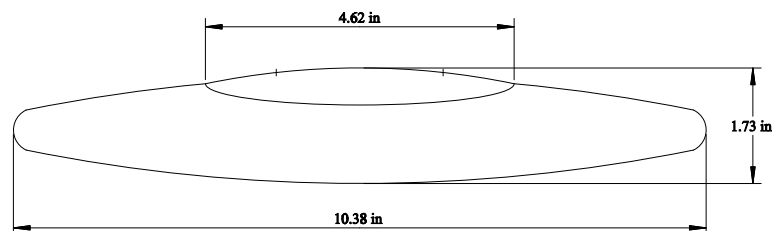


Flush mount most common, but cable mount also occurs regularly



Each bud has two wires and each wire is measured to a precise individual length to create the desired effect of the bud cluster and overall size and height

Glass drops with a brass cap. Size may vary slightly, and caps can be made custom color



Medusa Bloom

Standard finishes: powder paint
LED - 90+CRI 3000K or 2700K

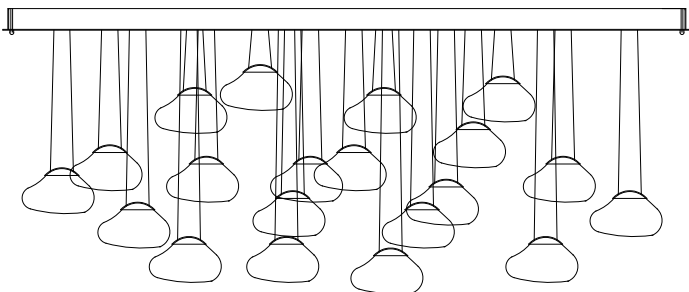


Medusa Bloom fixtures are extremely customizable, can be made in nearly any size, shape, or number of buds. Fixtures often are made so large that they need to be assembled from multiple smaller sections.

LED drivers are required, and the specific driver will vary depending on the requirements of the fixture.

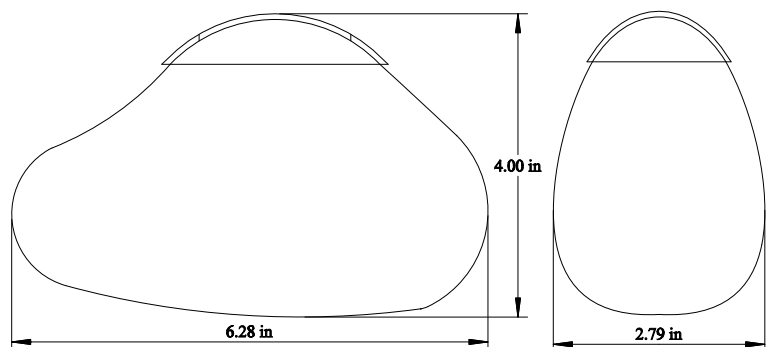


Flush mount most common,
but cable mount also occurs regularly



Each bud has two wires and each bud is measured to a precise length to create the desired effect of the bud cluster and overall size and height

Glass drops with a brass cap.
Size and shape will vary significantly.
Standard caps are bronze or blackened nickel
but caps can be made custom color.



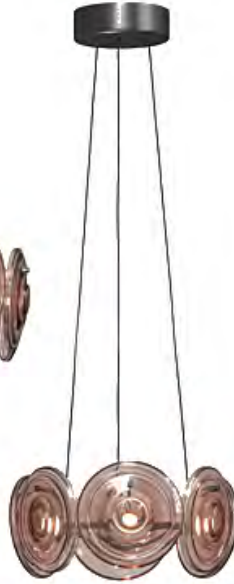
Cosmos

Standard finishes: Trojan Bronze powder paint
LED - 90+CRI 2700K

Round



Standard round size
14" 6 LED
24" 10 LED
32" 14 LED
42" 18 LED

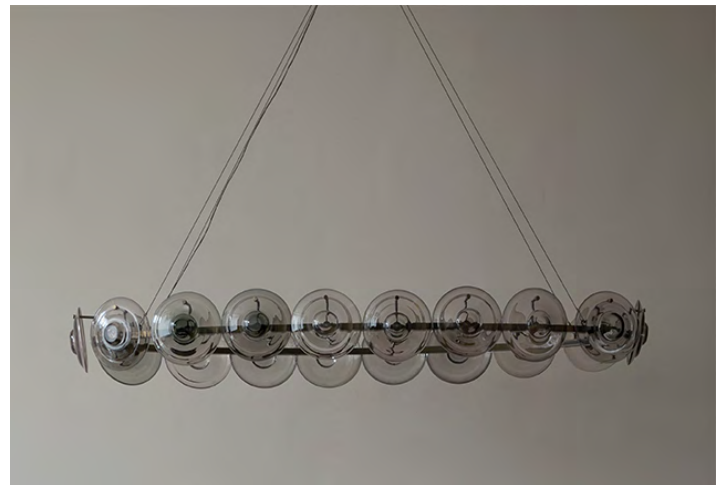


Wall light

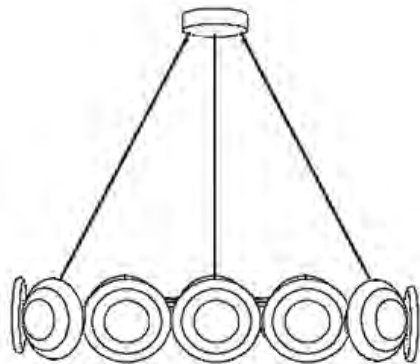


3 LED - not UL listed

Oval

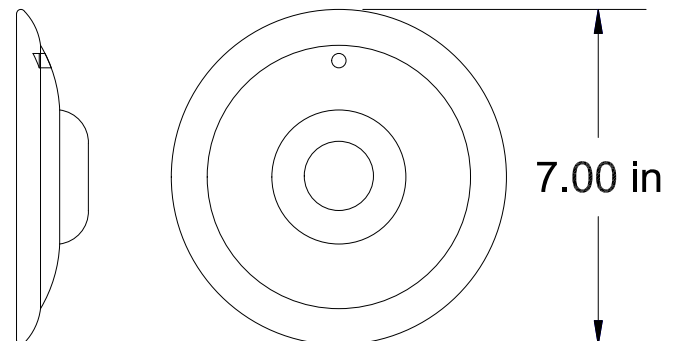


Cable mount required.
Most use 3 cables
Ovals and 42" round use 4 cables
Drivers housed in canopy, 1 powerfeed
is needed for each LED circuit.



Each glass disc is held by an arm in front of an LED housing. The arms alternate between long and short to avoid glass hitting each other.

Glass discs in Coral or Ash



Beach Pebble

Standard finishes: White oak, with Mangum Beige interior canopy
LED - 90+CRI 3000K or 2700K

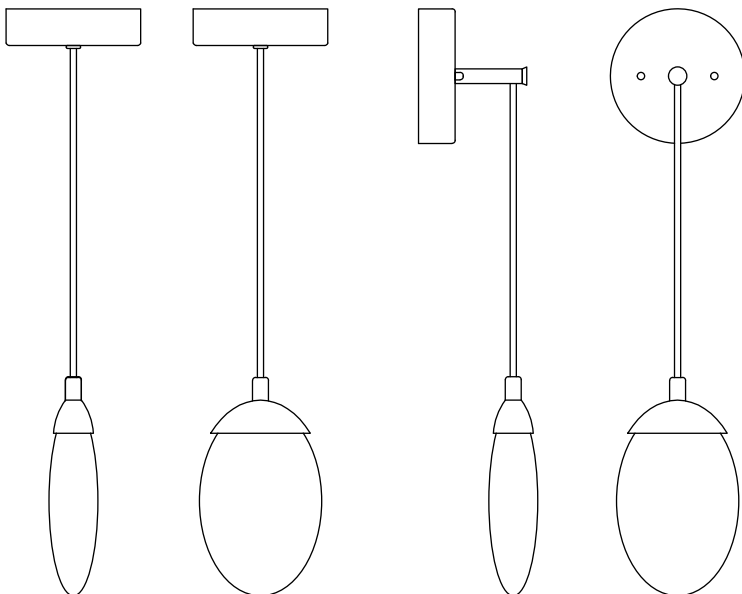
Can be made with multiple buds on a single fixture, each with its own defined height



Singles are most common

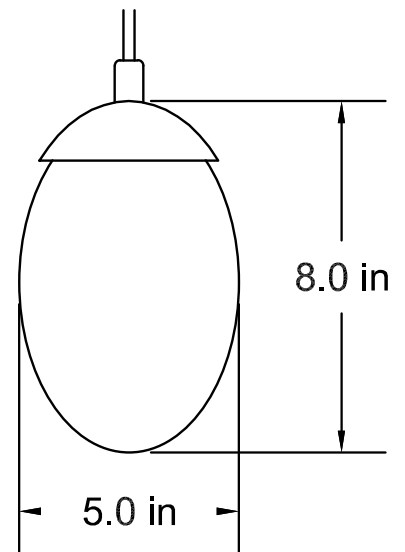


Wall light and pendant most common



Each bud is measured from the bottom of the glass to the top-most point of canopy for the desired overall height

Glass drops with slots for metal clamp to secure to, carved oak cap covers metal clamp and LEDs



Drifter

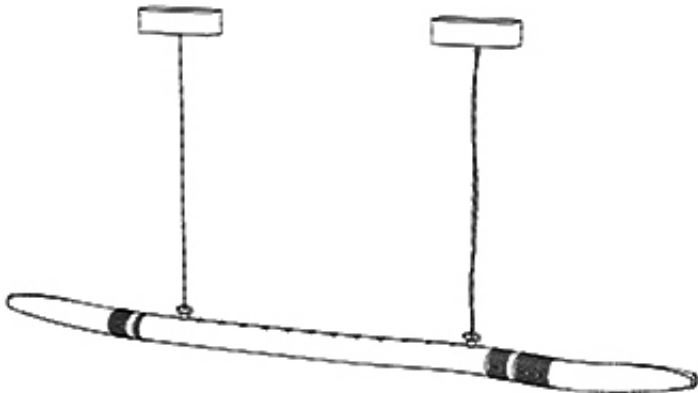
Solid oak fixture with brass canopies
LED - strip 2700K not UL listed



Standard sizes
54"
66"
90"



Cable mount required
2 canopies each with 1 cable
LED driver housed in only 1 canopy



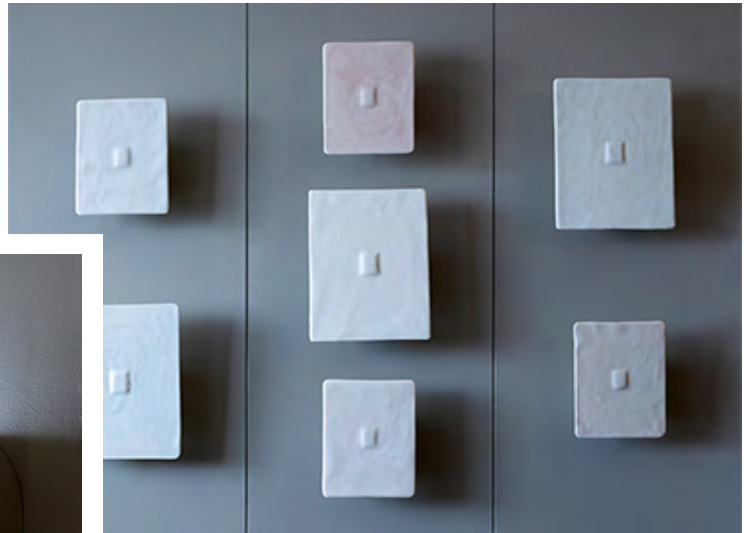
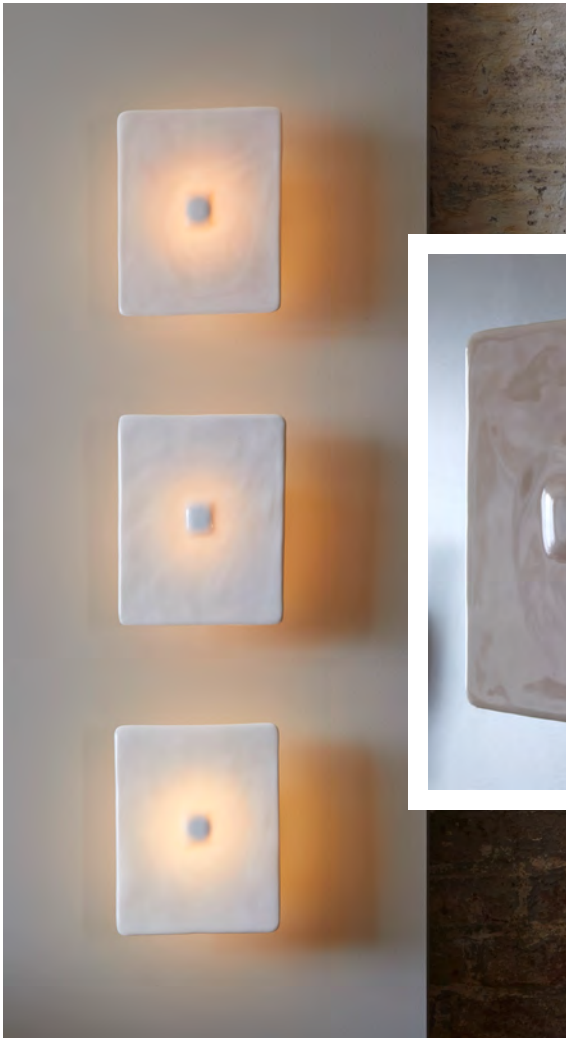
Cables are attached to "hangstraight" cleats for adjustment based on each uniquely shaped drifter fixture

Leather colors



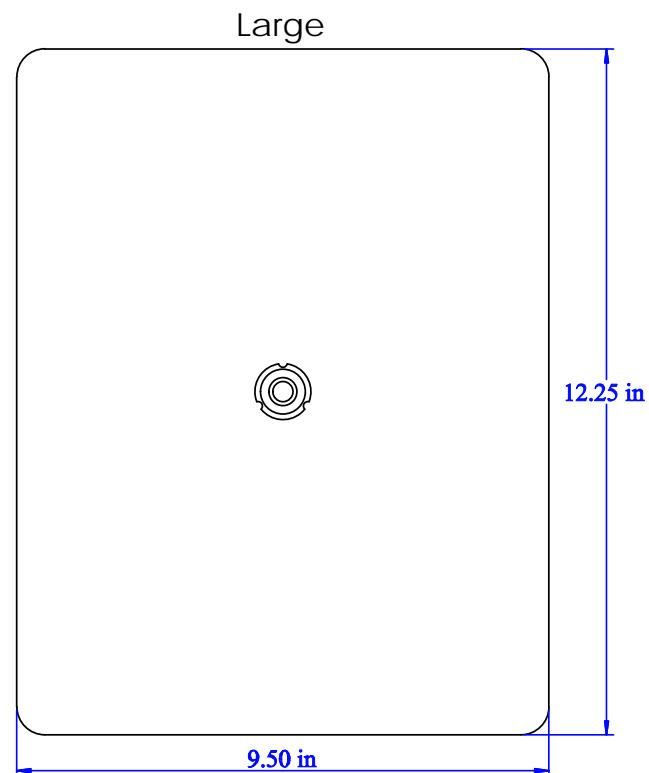
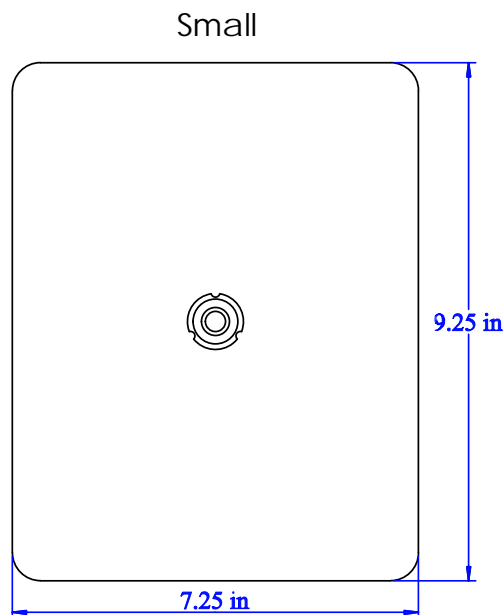
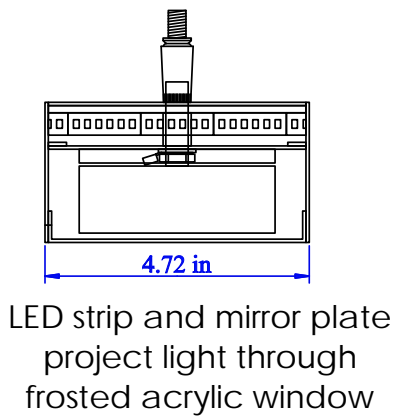
Mandala

Wall mounted steel housing
LED - strip 2700K not UL listed



Standard colors:
Shell White
Shell Pink

Porcelain plates with threaded flange
secured to the back



Sable

Standard finish: Black Jack powder paint
Square tubing frames covered with hand stitched leather



Sable Barstool
3/4" square tubing with 1.75" back rest
and 1/2" round brass footbar
standard seat heights: 25", 29", 33"



Sable Table
5/8" square tubing



Sable Stool
3/4" tubing with 1/2" round footbar

Sable Chair
5/8" square tubing with 4" back rest
with or without arm rests



Wisp

3/16" thick steel frames covered in hand stitched leather
Decorative brass feet
Standard finish: Super Grip Black powder paint



Wisp rectangular
3/16" folded steel legs
top inset 1/8" down



Wisp round
3/16" rolled steel legs
top flush



Wisp rectangular
with optional leather shelf
supported by brass rods in legs



Standard round sizes 18", 14", 10"
21" tall

Willow Table

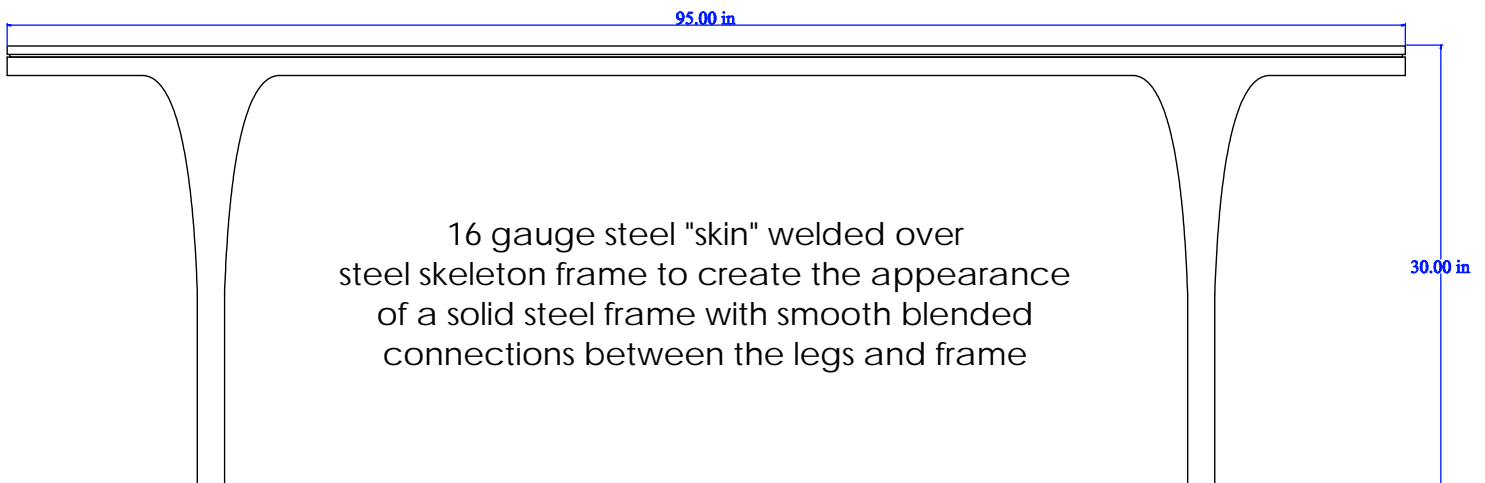
Steel frame table with wooden top
Flat Winter Gray powder paint standard



Oval and rectangle shapes standard

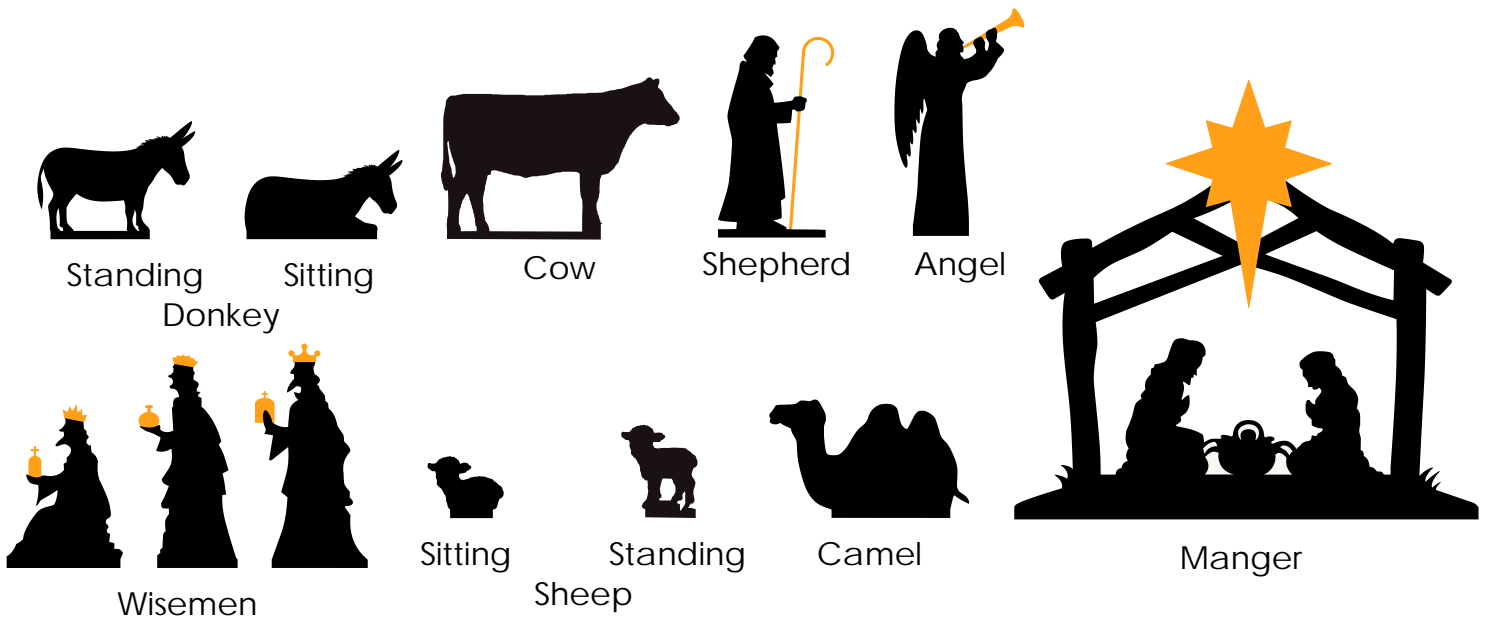


Standard tops
3/4" plywood with a Venetian Plaster finish
7/8" solid hardwood

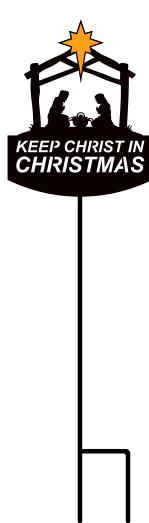


Mustard Seed Gift Shop

Custom products available exclusively at the Mustard Seed gift shop in Glandorf, OH.
All yard signs are made from laser cut 1/8" thick steel and coated with powder paint.



Easter Cross



12" Yard Sign



18" Yard Sign



Specialty Equipment



CNC Router

4ft x 4ft Bed
2D and 3D cutting,
carving, and engraving

Powder Paint System



17ft x 8ft x 8ft oven
thousands of colors available

26" x 19" Bed 9" of material
height room cutting or
engraving of wood, plastic,
and most non-metal materials



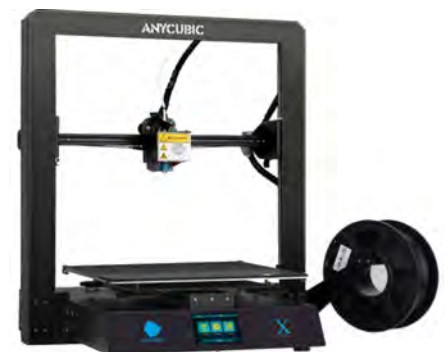
60W CO2 Laser

150W CO2 Laser



118" x 59" Bed with 2" of material height room
up to half inch thick cutting of most materials
cutting or engraving of wood, plastic, and most
non-metal materials

3D Printer



12"x12"x12" print area
PLA, ABS, PETG, TPU

CNC Router and Laser

Custom products cut or engraved using a CNC machine

Laser Engraved Gun Stocks



Laser Engraved Plaques



Oak boots carved on CNC router and coated with an epoxy glaze for a glass-like finish



Croquet mallet with laser engraved hammer head and custom welded handle with leather wrapping



Custom Logo Stainless Steel Tumblers



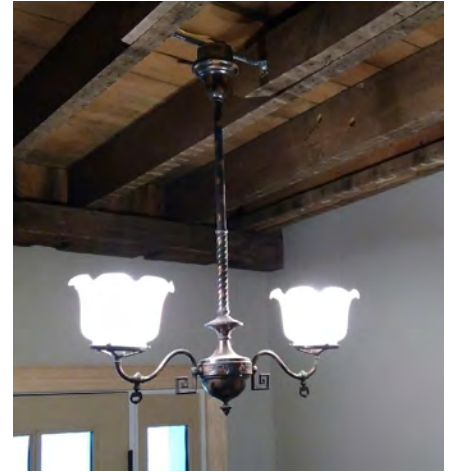
Plaque carved on CNC router with laser engraved plate

Made to Order Lighting

A sampling of other unique lighting products from JB Custom Concepts



Wooden wagon wheels converted into chandeliers



Antique gas light converted to electric

Laser cut steel logo shade lighting



Custom wine bottle lights

Incandescent

LED



Signage

Showcase of business signage created with various materials and methods



Multi-color layered steel sign



3D carved and painted wood signs



Veneer and acrylic indoor "Open" sign



Laser cut steel plate offset from interior wall with LED strips for back glow



Steel and acrylic outdoor sandwich boards



Steel exterior business sign with diffused LED lights to illuminate wording and flood lights for exterior lighting

Tap Handles

Custom beer tap handles for breweries and homes.
Huge variety of materials and processes available.

